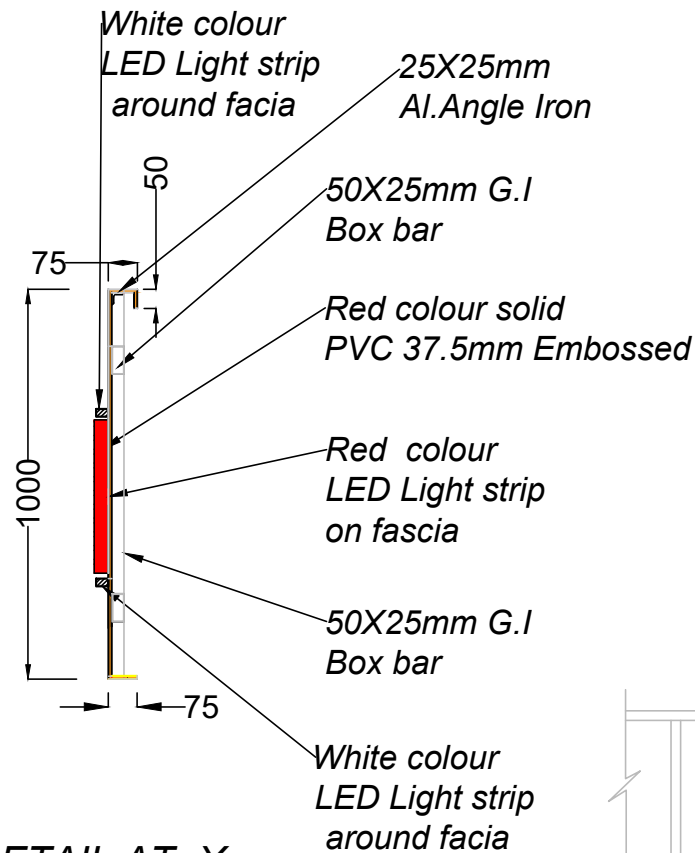


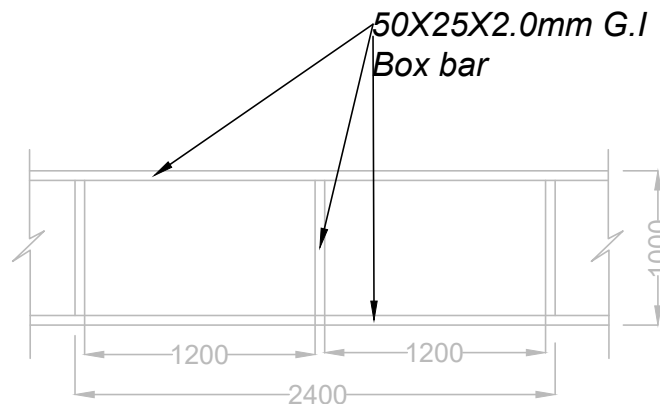
DETAIL OF CANOPY FASCIA

NOTE:

- A- 900mm dia logo 75mm wide Circular frame & figure with 3mm white perspex sheet completed with colour stickers & light fittings.
- B- 200mm wide Red Colour 2.5mm thick solid PVC plain sheet finished with 37.5mm embossed on fascia
- C- Fabricate & installation of 400mm high red colour perspex sheet Boxed type letters finished with 75mm thick embossed.



DETAIL AT -X-



DETAIL OF FASCIA FRAME



CEYLON PETROLEUM CORPORATION

ENGINEERING & PREMISES DEPARTMENT
NO. 609,
DR. DANISTER DE SILVA MAWATHA,
DEMATAGODA,
COLOMBO -09.

TP. NO. 5661717, 5661818
FAX 5455408